

**Product Code : PTS / ( Length in mm )**

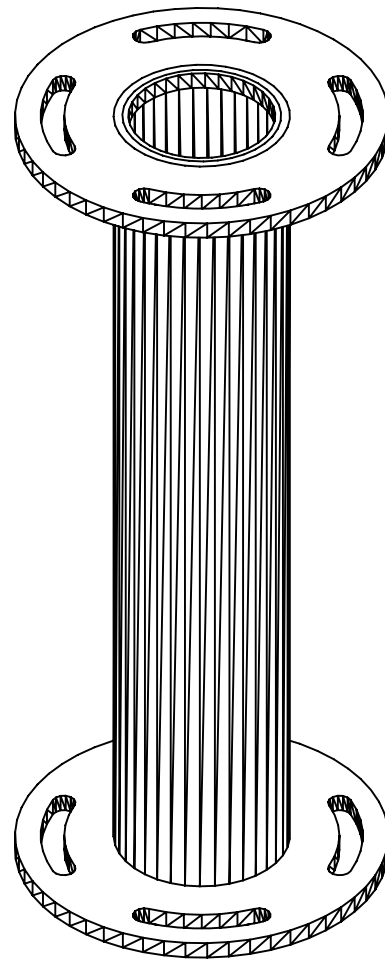
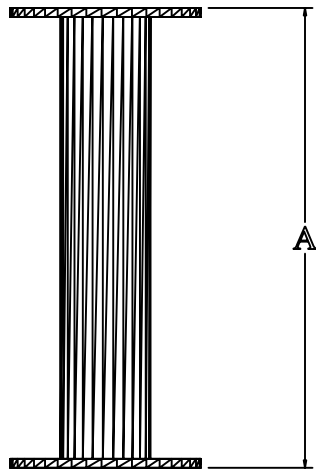
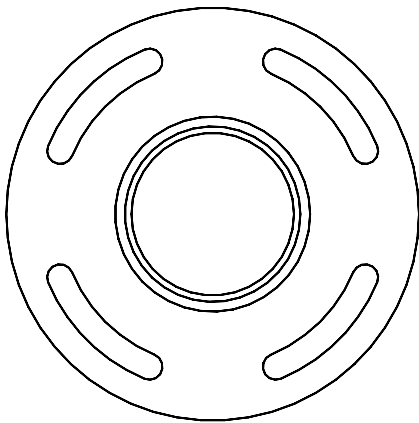
**Pole top spacer**

The pole top spacer is the perfect solution for increasing the height of existing cameras available in heights upto 2000mm.

**Product**

- Available in heights from 150mm – 2000mm
- Will fit to all CTE poles and towers
- Fully galvanised for maximum weather protection
- Painted to most Ral / Bs colours if required
- Standard 101.6 Pcd fixings for camera mounting
- Manufactured from hollow section steel for complete internal cable management.

PRODCUCT CODE	UPSTAND LENGTH A	TUBE DIA
PTS150	150mm	60.3
PTS300	300mm	60.3
PTS500	500mm	60.3
PTS600	600mm	60.3
PTS1000	1000mm	76.1
PTS1500	1500mm	76.1
PTS2000	2000mm	76.1



**MANY ITEMS ARE IN STOCK PLEASE CALL FOR UP TO DATE AVAILIBTY AND PRICES**



Camera Tower Engineering Ltd  
Cotton Hall Street  
Darwen, Lancs.  
BB3 0DW

Tel: 01254 701666 Fax: 01254 701888  
Email: [sales@camera-towers.com](mailto:sales@camera-towers.com)  
Web: [www.camera-towers.com](http://www.camera-towers.com)