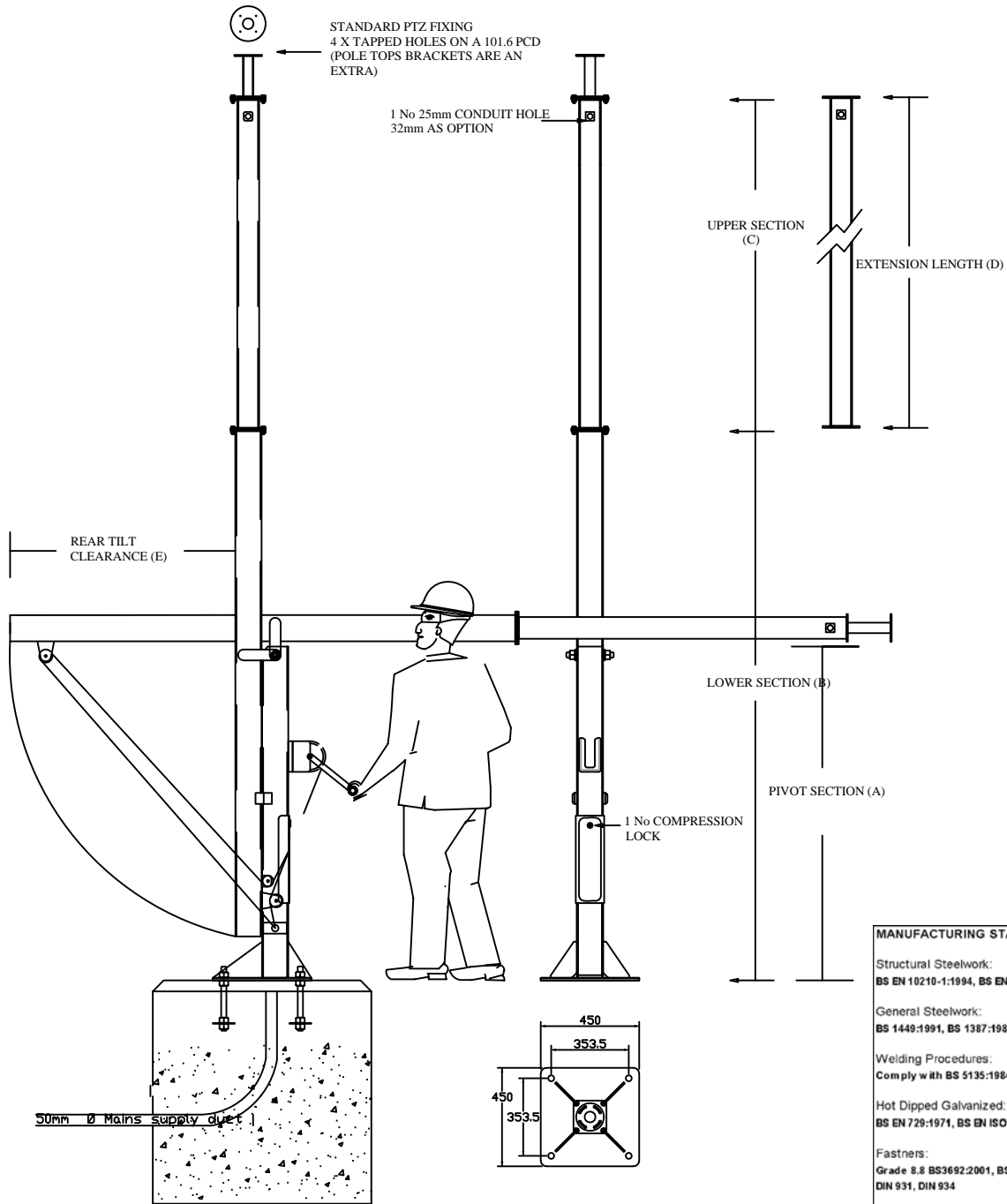


# SCCTD



Grade C35 Concrete recommended

MANUFACTURING STANDARDS:	
Structural Steelwork:	BS EN 10210-1:1994, BS EN 10210-2:1997
General Steelwork:	BS 1449:1991, BS 1387:1985, BS EN 10025:1993
Welding Procedures:	Comply with BS 5135:1984
Hot Dipped Galvanized:	BS EN 729:1971, BS EN ISO 1461:1999
Fasteners:	Grade 8.8 BS3692:2001, BS 4190:2001, DIN 931, DIN 934
Design Wind Loadings:	Based on CP3 Chapter V Pt 2 (1972) & BS 6399 Pt 2 (1997)
Paint Finishes:	BS 4800 & RAL colour range

PRODUCT CODE	HEIGHT MTR	PIVOT HEIGHT/SIZE A	LOWER SECTION/SIZE B	UPPER SECTION/SIZE C	EXTENSION LENGTH/SIZE D	GUSSET THICKNESS	BASE PLATE THICKNESS	DOOR APERTURE DIMENSIONS	REAR TILT CLEARANCE F	WEIGHT KGS
SCC3TD	3 mtr	1500 / 200sq	3M / 120 sq	N/A	N/A	6	12	400 (h) x 100 (w)	1500	165
SCC4TD	4 mtr	1600 / 200sq	3M / 120 sq	1M / 100 sq	N/A	6	12	400 (h) x 100 (w)	1600	195
SCC5TD	5 mtr	1500 / 200sq	3M / 120 sq	2M / 120 sq	N/A	8	15	400 (h) x 120 (w)	1500	281
SCC6TD	6 mtr	1500 / 200sq	3M / 200 sq	3M / 150 sq	N/A	10	20	400 (h) x 170 (w)	1500	450
SCC7TD	7 mtr	2000 / 200sq	3M / 200 sq	3M / 150sq	1M / 100sq	10	20	400 (h) x 170 (w)	2000	500
SCC8TD	8 mtr	2000 / 200sq	3M / 200 sq	3M / 150sq	2M / 100sq	10	20	400 (h) x 170 (w)	2000	533
SCC9TD	9 mtr	2000 / 200sq	3M / 200 sq	3M / 150sq	3M / 100sq	12	25	400 (h) x 170 (w)	2000	566
SCC10TD	10 mtr	2000 / 200sq	4M / 200 sq	3M / 150sq	3M / 100sq	12	25	400 (h) x 170 (w)	2000	592

All dimensions in the above table are in mm unless otherwise stated.

DIAGRAM 1:  
Template assembled

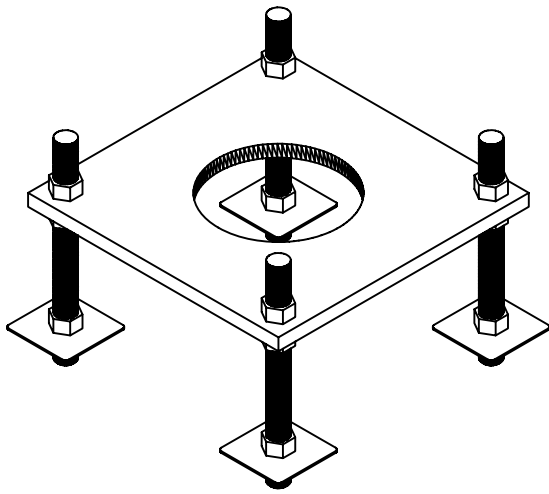
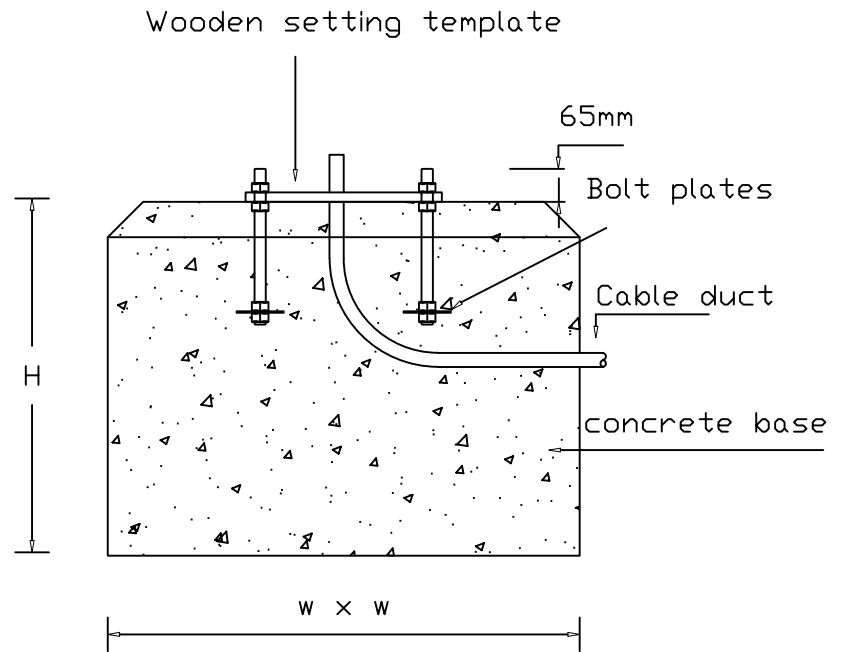


DIAGRAM 2:  
Foundation cross section



## PRODUCT CODE: SCCTD FOUNDATION DETAILS

The below recommended foundation details are typical and some site conditions may require increased concrete base sizes. A minimum soil bearing of 75 n/m sq is assumed. We recommend pressures below the minimum are assessed by a structural engineer.

Product Code	Height	Base Area (W x W)	Depth	Concrete Vol M <sup>3</sup>
SCC3TD	3 mtr	1000 x 1000	500	0.5
SCC4TD	4 mtr	1000 x 1000	500	0.5
SCC5TD	5 mtr	1000 x 1000	800	0.8
SCC6TD	6 mtr	1000 x 1000	1000	1
SCC7TD	7 mtr	1200 x 1200	1000	1.44
SCC8TD	8 mtr	1300 x 1300	1000	1.69
SCC9TD	9 mtr	1400 x 1400	1000	1.96
SCC10TD	10 mtr	1500 x 1500	1000	2.25
SCC11TD	11 mtr	1600 x 1600	1200	3.07
SCC12TD	12 mtr	1750 x 1750	1200	3.67

1. Excavate hole as per recommended area and depth.
2. Assemble root base as shown in diagram 1 ensuring that it is level and that four studs protrude at 65mm above base of wooden setting template.
3. Ensure ducting is in place we recommend that a minimum of 150mm extrudes from ground level, if required this can be trimmed back once concrete is set.
4. Pour concrete ensuring that it is a mix of C35 to table 6 BS8110 and then tamp down well.
5. Push wooden template and bolts into concrete and level accordingly.
6. When fitting the column, remove wooden template and ensure that the concrete base is in complete contact with the underside of column and torque the nuts to 230-270 Nm (175 – 200 ft.lb)
7. When the column has been fitted, protect the studs with a suitable protective coating. Denzo tape or similar is recommended.