

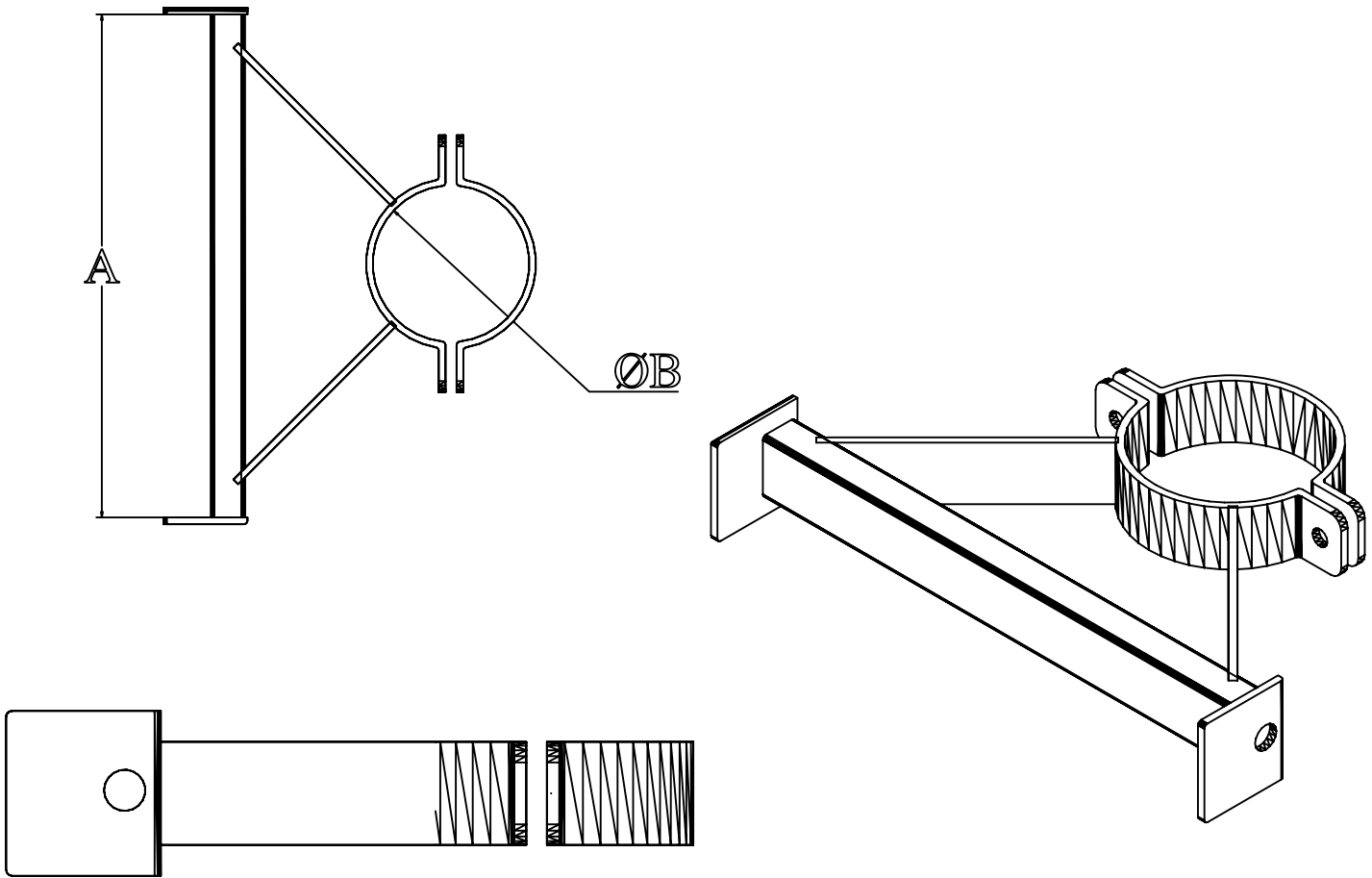
**Product Code : LRC/ ( Required diameter or CTE pole part No. )**  
**Ladder rest circular**

Ladder rest clamp brackets allow engineers easy methods of servicing cameras.  
Available bolted to columns / towers before delivery if required.

**Product**

- Available to suit circular and square sections from 60 – 300mm
- Will fit to all CTE poles and towers
- Fully galvanised for maximum weather protection
- Painted to most Ral / Bs colours if required
- Can be manufactured and supplied for existing poles
- Lindaptor style clamp arrangement
- Supplied with bolts and nylocks as standard

PRODCUCT CODE	LADDER BAR LENGTH A	CLAMP SIZES AVAILABLE B	
LRC	450	76 / 89 / 114 / 139 / 168 / 193 / 219	



**MANY ITEMS ARE IN STOCK PLEASE CALL  
FOR UP TO DATE AVAILABILTY AND PRICES**



Camera Tower Engineering Ltd  
Cotton Hall Street  
Darwen, Lancs.  
BB3 0DW

Tel: 01254 701666 Fax: 01254 701888  
Email: sales@camera-towers.com  
Web: www.camera-towers.com